

Portfolio: Small Office Buildings



Multipurpose Training Center

Project Magnificat House W.T. and Louise J. Moran Center, Houston

Client Magnificat House

Architect leslie elkins architecture

Design Team Leslie Elkins, AIA; Lenja Gould; Junko Nonaka; Fumie Yoshii

Photographers Hester + Hardaway and Junko Nonaka

Located in the rapidly gentrifying Midtown district of Houston, the Magnificat House W.T. and Louise J. Moran Center aims to support a population in transition by providing them with valuable skills. The owner is a faith-based, nonprofit, charitable organization that ministers to homeless and mentally ill individuals, helping them to integrate into society.

Leslie Elkins, AIA, designed the \$1.45M LEED Silver-certified training center to house a retail shop, a woodworking shop, an art studio/gallery, and a facilities maintenance office. Residents of Magnificat House live on adjacent campuses, and the new building provides a community space where they can learn valuable skills in woodworking and art. The education is complemented by the opportunity to exhibit their work on site. The client requested an efficient and economical one-story structure with flexible, low-maintenance interior spaces. Openness, ample daylight, and natural ventilation were specified as high priorities.

Elkins' design is an L-shaped, 7,000-sf structure sited close to the street with parking in the

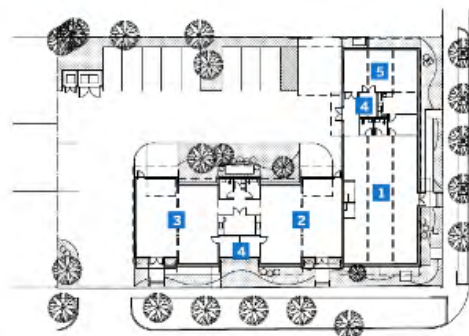
rear. Located on a busy intersection, the building is in compliance with Midtown Houston's 10-ft urban setback regulation. This proximity to the sidewalks and the streets gives the retail shop maximum visibility that is enhanced by the engaging massing and rooflines.

The retail wing is defined by a dynamic butterfly roof marked by clerestory windows. At the sidewalk level, this section of the building is extremely transparent. Large storefront windows, protected by metal canopies, encourage interaction between the Magnificat House community and the surrounding neighborhood.

The workshop and art studio/gallery wing is situated perpendicular to the retail wing. Five slightly sloped roofs, arranged in a flip-flop manner, create a stepping pattern along the street. The facade composition recognizes the distinct spaces within the building. They project and recess, creating a push-pull effect. On the rear facades, glazed garage doors connect the individual interior spaces to the parking lot, which provides ample room for loading and unloading.



Common materials, installed with special attention to detailing, are used throughout the building. Grey-colored concrete veneer tiles anchor the building to the site. Moss-colored HardiPlank siding serves as the primary facade-cladding material. It is complemented by the exposed steel-column framing, which is finished in a dark grey. Below the deep roof eaves, exposed wood roof trusses project from the interior. This continuity between the exterior and interior also occurs with the steel framing. The spaces all have an open, lively, and utilitarian look. The color scheme is white and grey with bright color accents. ■



- SITE PLAN**
- 1 RETAIL
 - 2 STUDIO/GALLERY
 - 3 WOODWORKING SHOP
 - 4 STORAGE
 - 5 RECEIVING/SORTING

CEILING: Janov Millwork & Manufacturing; **RESILIENT WALL:**
BASE: Johnsarite (Rockford Business Interiors); **TILE CARPETING:**
 Shaw Industries (Rockford Business Interiors); **SPECIAL WALL**
SURFACES: Ardex; **PAINTS:** Sherwin Williams; **MARKER BOARDS:**
 Clarus Glassboards

Overland Partners Office, San Antonio

Contractor The Beck Group

Consultants **MEP:** Cleary Zimmerman; **STRUCTURAL:** Archi-
 tectural Engineers Collaborative; **LANDSCAPE:** Coleman & Associ-
 ates; **CIVIL:** KFW Engineers & Surveying

Resources **FENCES, GATES, AND HARDWARE:** Overland
 Partners; **METAL MATERIALS:** Triple S Steel; **ARCHITECTURAL**
METAL WORK: Overland Partners (Triple S Steel); **ARCHITECTURAL**
WOODWORK: TerraMai; **MILLWORK:** Circle C Millworks; **SPECIALTY**
DOORS: Overland Partners; **GLASS:** Sharp Glass; **DOOR HARD-**
WARE: Ingersoll Rand; **TILE:** Crossville; **DECORATIVE FINISHES:**
 Modern Crete; **STONE:** Caesarstone; **DEMOUNTABLE PARTITIONS:**
 DIRTT, Workplace Resource; **FOOD SERVICE EQUIPMENT:** GE
 Monogram; **KITCHEN CABINETS:** Circle C Millworks; **BLINDS AND**
SHADES: Lutron; Aledo Blinds; **TABLES:** Overland WorkShop, Tech
 Product Specialties, Richlite, Chris Wilhite; **FURNITURE:** Herman
 Miller; **SOLAR ENERGY SYSTEMS:** Freedom Solar Power

1000 Foch Street, Fort Worth

Contractor JSZY Construction

Consultants **STRUCTURAL:** Labsinger & Fotts Structural Engi-
 neering; **MEP:** MEP Systems Design and Engineering; **LANDSCAPE**
ARCHITECT: Hocker Design Group; **GRAPHIC DESIGNER:** NotLestad
 Design

Resources **METAL MATERIALS:** Berridge Galvalume Roofing;
VAPOR RETARDERS: Henry Waterproofing; **SIDING:** Accoya Wood
 Siding (Universal Forest Products)

Magnificat House, Houston

Contractor Brookstone

Consultants **STRUCTURAL:** Structural Engineering Consulting;
CIVIL: Karen Rose Engineering & Survey, LEED CONSULTANT,
 Kirksey

Resources **CONCRETE PAVEMENT:** Campbell Concrete &
 Materials; **FENCES, GATES, AND HARDWARE:** Schlage, Ives, LCN,
 Von Duprin, Glynn Johnson; **CONCRETE MATERIALS:** Campbell
 Concrete & Materials; **MASONRY UNITS:** Holcim; **MASONRY**
VENEER ASSEMBLIES: Headwaters; **LAMINATES:** Abet Laminati;
WATERPROOFING AND DAMPROOFING: Henry Company; **BUILDING**
INSULATION: Owens Corning; **SIDING/FASCIA AND SOFFIT PANELS:**
 James Hardie; **METAL ROOFING:** Berridge Manufacturing; **METAL**
DOORS, FRAMES, AND WINDOWS: Oldcastle; **PREASSEMBLED**
METAL DOOR AND FRAME UNITS: Arm-R-Lite; **GLASS:** PFG Indus-
 tries; **GYPSON FABRICATIONS:** USG; **TILE:** Daltile; **LAMINATE FLOOR-**
ING: Johnsarite; **PAINTS:** Farrow & Ball; **SIGNAGE AND GRAPHICS:**
 Ostrom Glass & Metal; **AWNINGS:** Avadek ■



2013 Design Award Winner
 Project: Hillside Residence, Austin
 Architect: Alterstudio Architecture
 Photographer: Casey Dunn



Coming Next Issue

September/October 2013

Featured Projects: Design Awards

1221 Broadway, San Antonio
 Lake|Flato Architects with OCO Architects

Design Shop, Dallas
 Shipley Architects

Fire | Beach House, Galveston
 HDR with English + Associates Architects

**Health Services Building, Arizona State University,
 Tempe, AZ**
 Lake|Flato Architects with Orcutt|Winslow

Hillside Residence, Austin
 Alterstudio Architects

Kathlyn Joy Gilliam Collegiate Academy, Dallas
 SHW Group

LifeWorks, Austin
 Miró Rivera Architects

Renovation of 714 Main, Fort Worth
 Schwarz Hanson Architects

Roy Kelly Terminal and Parking Garage, Bryan
 Powers Brown Architecture

T3 Parking Structure, Austin
 Danze Blood Architects

Webb Chapel Park Pavilion, Dallas
 Quimby McCoy Preservation Architecture with Cooper
 Joseph Studio

Portfolio: Small Office Spaces

Weisbart Springer Hayes Offices, Austin
 Gensler

PDR Offices, Houston
 PDR

Peddle Office, Austin
 Alterstudio Architecture

Highland Capital Management, Dallas
 Michael Malone Architects

Bonus Distribution

Texas Architects 74th Annual Convention & Expo
 Nov. 7-9, Fort Worth

TASA/TASB Convention
 Sept. 27-29, Dallas

**National Trust for Historic Preservation National
 Preservation Conference**
 Oct. 30-Nov. 2, Indianapolis, IN

For advertising information:

If you were a supplier on any of these listed projects,
 call us!

It's a great opportunity to showcase your products and
 services to thousands of design professionals. Ads start
 at just \$315 and reach your target audience!

**We offer exhibitors 10% discount on advertising in
 this issue!**

Tod Stehling
 Advertising Sales Representative
 512.615.7745
tod@texasarchitects.org

Deadlines

Thursday, July 25, 2013
 Space Reservation

Tuesday, July 30, 2013
 Materials Due