

SAFETY GUIDELINES

For Garage Door Systems

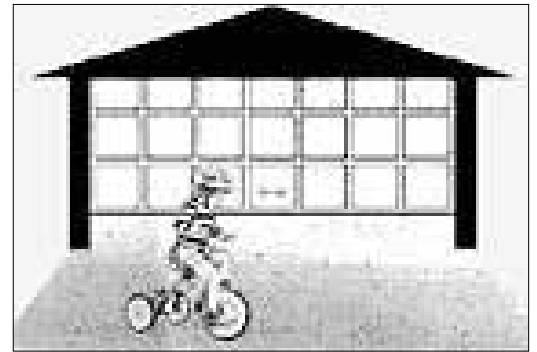
 **Look for this Safety Alert Symbol below. This symbol indicates a potential personal safety hazard that can result in injury or death.**


A garage door is the largest moving object in the home.

These doors are often operated by electric door openers. Proper installation, operation, maintenance, and testing of the garage door and automatic opener are necessary to provide safe, trouble-free operation.

An improperly adjusted garage door or automatic opener can exert **deadly force** when the door closes. This could lead to serious injury or death from being hit by a closing garage door or from being trapped under the door.

A few simple precautions can protect your family and friends from potential harm. Please take a few minutes to read the following safety tips. Refer to your garage door and opener owner's manual for details specific to the model you own. Then check the operation of your garage door and automatic opener.



 **Do not stand or walk under a moving door!**

Do not let children or adults play "beat the door." It is dangerous and can result in serious injury or death. Adults should set a good example. Know how to use the emergency release in case someone is pinned by the door.

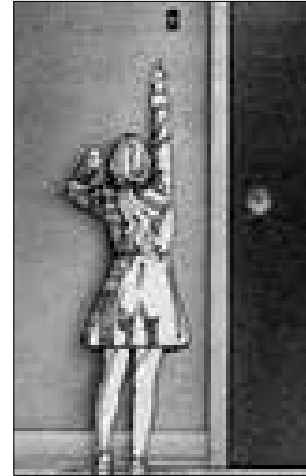


 **Do not let children play with or use the transmitters or remote controls.**

Always place and store them out of the reach of children.



! **The push button wall control should be out of reach of children** (at least 5 feet from the floor) and away from all moving parts. Mount and use the button where you can clearly see the moving garage door.

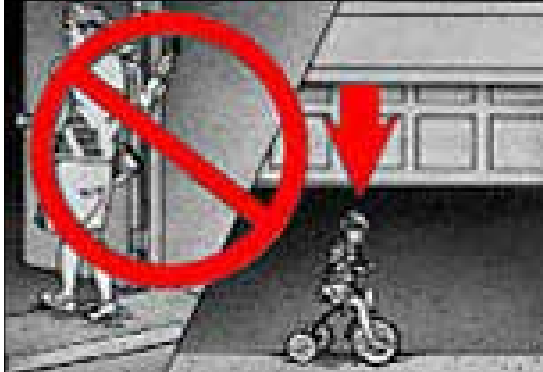


Garage door openers are not toys.

Careless operation and allowing children to play with or use garage door opener controls can lead to tragic results. Discuss garage door safety with your children. Explain the danger of being trapped under the door.

! **When using the push button or transmitter, keep the door in sight until it completely stops moving.**

Teach children never to play under or near an open garage door.



! **Teach children to keep their hands and fingers clear of section joints, hinges, track, springs, and other door parts.**

Contact with a moving door or its hardware could cause injury. These injuries can also happen with garage doors that don't have automatic openers.



This important information is provided by the U.S. Consumer Product Safety Commission, the National Safety Council, and the Industry Coalition for Automatic Garage Door Opener Safety.