

Fluoropon® Color Guide

COMMERCIAL | RESIDENTIAL



Fluoropon® coatings are field proven, high performance exterior finishes with resistance to fading.

These durable coatings provide outstanding resistance to ultraviolet rays, exceptional color retention and resistance to chalking and chemical degradation. Fluoropon®'s performance has been proven in natural exposure tests at Valspar's Test Fence facility and projects that were completed 10, 20 or more years ago. What you'll see are Fluoropon® coatings that are exceeding performance needs and have maintained their beauty over time.

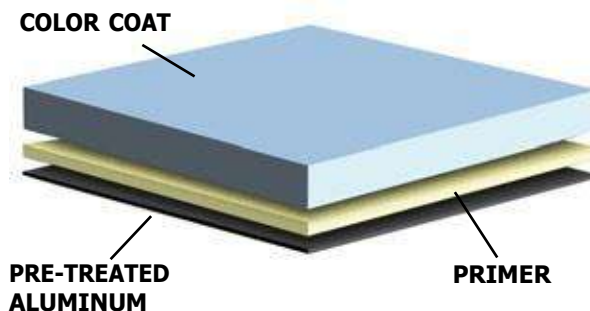
AAMA 2605 Matters

AAMA 2605 is the high-performance exterior specification governed by American Architectural Manufacturer Association (AAMA). A coating meeting this rigorous specification and testing would have 70% fluoropolymer and 10 years South Florida exposure, are only a few of the performance characteristics monitored in the quality control reviews. These finishes exhibit outstanding resistance to humidity, color change, chalk, gloss loss and chemicals. Valspar's coatings meet and even surpasses these performance requirements.

Sustainability Matters

Green design is less about following a popular trend as it is simply treating our planet with respect. And the extrusion coating industry is no exception. As an industry leader, Valspar is committed to high performance coatings that lessen the negative impact on our environment.

- Valspar has over 800 products that meet Energy Star strict requirements
- Fluoropon® SR (solar reflectance) products can reflect over 70% of the sun to reduce heating impact on buildings



A two coat system with primer and color top coat.

Fluorpon® Color Guide



FLUROPON

This system provides a powerful chemical bond, superior resistance to ultraviolet radiation resulting in exceptional color retention, resistance to chalking and chemical degradation.

| | | | |
|--|---|---|--|
|  |  |  |  |
| REGAL WHITE 391B485 | BONE WHITE 391X035 | COLONIAL WHITE 391A500 | CHURCHILL HOTEL LACE 393B3696 |
|  |  |  |  |
| SANDSTONE 393X321 | BEIGE 393B379 | SEAWOLF BEIGE 397F199 | LIGHT GREY 392B545 |
|  |  |  |  |
| CHARCOAL 392F232 | BUCKSKIN 393B3718 | DARK BRONZE 397A509 | BLACK 398F019 |
|  |  |  |  |
| HARTFORD GREEN 395F518 | PATINA GREEN 395B899 | SLATE BLUE 396B1082 | REGAL BLUE 396F276 |
|  |  |  |  |
| LEMON SHINE 393A992 | TERRA COTTA 394F068 | REDWOOD 394X409 | BRANDYWINE 394A1235 |

OVERHEAD DOOR MODELS

CUSTOM OPTIONS

FINISH OPTIONS

MOTOR OPTIONS

COLLECTIONS

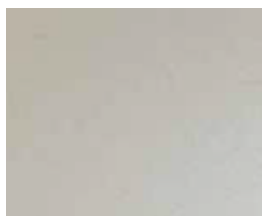
Fluorpon® Color Guide



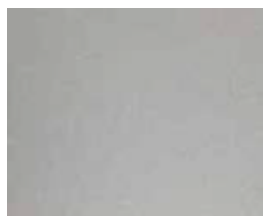
FLUROPON CLASSIC II

This coating system consists of a special primer and a durable color coat containing mica pearlescent flakes, the appearance will be directional in nature.

OVERHEAD DOOR MODELS



PEARLESCENT WHITE
399C6825



BRIGHT SILVER
399X440

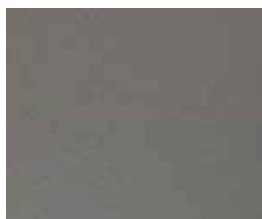


SATIN NICKEL
399C2384

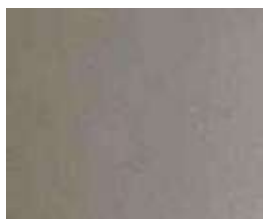


GATWICK SILVER
399A998

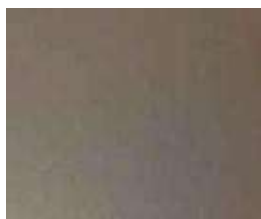
CUSTOM OPTIONS



ZACTIQUE
399C491



COPER REFLECTION
399C209



SAGE
399C1132



BRIGHT GOLD
399A651

FINISH OPTIONS



GOLD WATCH
399A544



CORAL REEF
399C2332

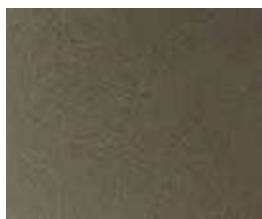


CLASSIC COPPER
399C228



DARK GOLD
399C2397

MOTOR OPTIONS



AGED COPPER
399C113



ROYAL MIST
399C1510



NY STATE OF MIND
399C6710



CHARRED BLUE
399B257

COLLECTIONS

Fluorpon® Color Guide



FLUROPON PREMIERE

This coating system is used when a bright color is desired. It provides outstanding resistance to ultraviolet radiation resulting in exceptional color retention and resistance to chalking.



**FIRESIDE
SL4A498**



**AUTUMN BLAZE
SL3A1023**



**CARNIVAL RED II
SL4A139**



**EAST GEORGIA
GREEN SL5A208**



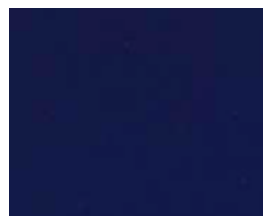
**MELROSE
SL5A165**



**LAGUNA BLUE
SL6A1014**



**LION BLUE
SL6A018**



**DEEP BLUE
SL6A1030**



**NISHA PLUM
SL6A026**



**BLACK
SL8A007**

Color Matters

The colors in this brochure are only a small sampling of Valspar's full palette of colors, gloss levels and surface textures. Hundreds of additional colors are available from stock. Even then if you do not find your perfect color, allow us to put our advanced color matching technology to work for you for even the most unique and unusual colors.

ArmRLite has a 1 year finish warranty, except on installations within 1 mile of water

OVERHEAD DOOR MODELS

CUSTOM OPTIONS

FINISH OPTIONS

MOTOR OPTIONS

COLLECTIONS