

# Overhead Sectional Security Model

COMMERCIAL

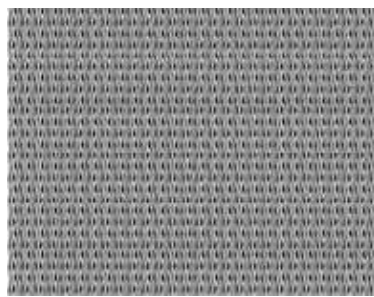


*Security Model features an exclusively welded aluminum frame with options to meet your security needs.*



## CHAIN LINK

- Upward acting
- Available to meet a large array of air space requirements for different applications
- Offers the highest visibility in security conscious environments



## MESH SCREEN

- Upward acting
- Available to meet Federal Specifications STD A-A-1037B for security doors and food applications
- Effective for addressing bug and vermin infestations as well as curb theft

## SUGGESTED APPLICATIONS

- Food and product warehouses
- Food production facilities
- Agricultural storage locations
- Health and medicinal products warehouses
- Cosmetics and chemical storage
- Paper mills
- Distribution centers
- Parking garages
- Correction facility sally ports
- Laboratories and research facilities
- Infestation prone facilities by either bugs or vermin
- Structures requiring added security features or theft deterrents.

OVERHEAD DOOR MODELS

CUSTOM OPTIONS

FINISH OPTIONS

MOTOR OPTIONS

COLLECTIONS

# Overhead Sectional Security Model



## SPECIFICATIONS

<b>WIDTH</b>	Maximum width up to 30'-2"
<b>MATERIAL</b>	Extruded 6063-T6 Alloy
<b>FRAME THICKNESS</b>	1 <sup>3</sup> / <sub>4</sub> "
<b>TOP RAIL</b>	4 <sup>1</sup> / <sub>2</sub> " , 7 <sup>1</sup> / <sub>2</sub> "
<b>BOTTOM RAIL</b>	4 <sup>1</sup> / <sub>2</sub> " , 7 <sup>1</sup> / <sub>2</sub> " - tapered or sloping
<b>MEETING RAILS</b>	3 <sup>7</sup> / <sub>8</sub> " wide per pair
<b>END STILES</b>	3 <sup>3</sup> / <sub>8</sub> " , 4 <sup>1</sup> / <sub>2</sub> " , 7 <sup>1</sup> / <sub>2</sub> " wide
<b>CENTER STILES</b>	3 <sup>3</sup> / <sub>8</sub> " wide

All dimensions include beading.

<b>FABRICATION</b>	By concealed heli-arc welding - 20 YEAR WELDED ALUMINUM FRAME WARRANTY - except for top sections when trolley operated.
<b>FINISH</b>	Anodized per Aluminum association number A-21 – custom finishes available. 20 year warranty on clear anodized finish, dark bronze and Black. 1 year warranty on powder coats and Duranars®.
<b>PANELS</b>	Chain link, wire mesh, or security screen panels to meet project code and air space requirements.
<b>GLASS</b>	Impact and safety glazing is available GLASS – consult factory.
<b>TRACK</b>	ArmRTite 2" x .083 galvanized steel or 3" x .109 galvanized as indicated, Horizontal tracks curved on a 15", 20" or 32" radius, high lift, vertical lift. Vertical tracks bracket or angle mounted.
<b>ASTRAGAL</b>	Vinyl astragal is standard on all door bottoms.
<b>SPRINGS</b>	Torsion springs on a continuous ball bearing cross header shaft are standard. Hollow shaft is standard. Solid shaft available.
<b>HARDWARE</b>	Hinges are 13' gauge tubular type galvanized steel with roller carrier incorporated in hinge. End hinges and the center hinges are secured with specially "designed" 1/4" self tapping screws. Rollers are heavy duty cadmium plated steel ball bearing rollers with hardened inner and outer race. ALL SECTIONS ARE DRILLED FOR HINGES.
<b>LOCKING</b>	End stile lock, inside locking only is standard. Other arrangements available. All locks to be field drilled.

## CUSTOM OPTIONS

**Pedestrian Pass Door within overhead door (with and without step over)**

**Outside hood cover for exterior mounted doors**

**Sloping bottom rails**

**High-lift, standard, and vertical lift track options available. Consult factory regarding low-headroom applications.**

**Matching entrance doors and gates**

**High cycle springs**